

March 2011

General Meeting

8.00pm Wednesday
9 March

Community Centre,
Annandale Shopping
Centre

Committee Meeting

7.30pm Monday
28th March 2011

2 Hoya Court
Annandale

Dates to Remember

Sunday 13th March.
Outing to AIMS Meet at
9am at the gates.

This Issue

Chairman's Report	2
In Flower for February	3
Plants of Mt Stuart	4
Keith's Tech spot – Floral Features	5
Minutes from 2010 AGM	8



Abelmoschus moschatus
ssp tuberosus

The Native Gardener

Newsletter of the
Society for Growing Australian
Plants
Townsville Branch Inc.

PO Box 363, Aitkenvale, Qld. 4814.
sgaptownsville.org.au

Chairman	Janice Lough	4728 7302	j.lough@aims.gov.au
Vice Chairman	Rex Grattidge	4729 0270	rgr57487@bigpond.net.au
Secretary	John Elliott	4728 7302	jw-elliott@aapt.net.au
Treasurer	Keith Townsend	4755 2098	noeltownsend@bigpond.com
Newsletter Ed.	Del Windridge	4773 3559	colanddel01@bigpond.com
Librarian	Rex Grattidge	4729 0270	rgr57487@bigpond.net.au
Committee			

Wednesday 9th March 8pm

James Woodford

Author and science journalist will present

'The Wollemi Pine'

**James will also have copies available of his
Wollemi and recent *Great Barrier Reef* books
plus**

Keith's 'tech-spot' on 'Floral Features'

Many of you will remember that we were lucky to have Mark Stoneman talk to us in 2007 about his vision for the future of the Cromarty Wetlands, so we are very pleased to invite Mark back again next month for an update on this landmark environmental project.

Mark Stoneman will talk on "The Rehabilitation & Interpretation of Wongaloo Conservation Park" on Wednesday April 13th. Please mark your diaries and join us.

Chairman's Report

With the help and support of all our members 2010 has been a very successful year. We have maintained our monthly schedule of talks on a wide variety of subjects, and backed these up with regular outings. We have continued to be enthralled with the plants at the Burra Range, and plan to make two excursions this year in order to appreciate later flowering varieties.

Any lack in numbers on our outings is more than matched by enthusiasm and expertise, as we explore and document the great diversity of plants in our region, many of which are surprisingly little known. We make regular additions to the plant lists which are updated on our website, and we even have the occasional mystery plant appear!

2010 saw the 40th anniversary of the establishment of the Townsville branch of SGAP. To be exact, it was formed on the 25th June 1970 and thanks to the enthusiasm and drive of its members it has continued to thrive over the years. I would like to pay tribute to three of our members who joined in the early days and continue to make a huge contribution to the welfare of our society.

Don Glasgow continues to work a large garden on the Ross River and never fails to bring a collection of flowers to our *show and tell*, which always enhances our meetings.

Betsy Jackes gives regular talks and is tireless in offering advice and fielding questions, and is always willing to help with plant identification.

Keith Townsend has made a huge contribution in a variety of roles over the years, not least in the publication of two books, and continues to perform the duty of Treasurer, keeping the society in healthy financial circumstances.

I must also mention the support and quiet achievement made every month by Rex Grattidge; our new newsletter editor Del Windridge, and Paul Brown who acts as Auditor.

Best wishes for another 40 years!

Janice Lough.
March 2011

At our next meeting we will hold our AGM!

All our officers will stand down whilst we conduct the necessary business, consisting of our Chair's report, Treasurer's report and election of officers for 2011/12.

Attached are the minutes from last year, and the astute amongst you will notice that the proceedings took 11 minutes. With your help we can be equally as brief!

Trees and Cyclones

In the wake of Cyclone Yasi, Betsy Jackes has added a very thorough and useful guide to trees and cyclones on the JCU Discovery website.

www-public.jcu.edu.au/discovernature/choosingplants/index.htm



In flower for February

Despite cyclone Yasi's fury some old faithfuls reminded us of the wonder of nature and the extraordinary resilience of our natives in true '*the show must go on*' style.

- 🌸 *Grevillea decora*
- 🌸 *Grevillea* "Lana Marie"
- 🌸 *Syzygium* "Pink Cascade"
- 🌸 *Sannantha papillosa*
- 🌸 *Dimorphocalyx australiensis* (Shipton's Glory)



Grevillea decora

Plants of Mt Stuart

Centranthera cochinchinensis

LINDERNIACEAE (formerly in
Orobanchaceae and Schrophulareaceae)

Swamp Foxglove

As its common name suggests, this small herb prefers swamps and other moist sites, which are readily found in our region at present.

Swamp Foxglove is an upright annual herb 12-50 cm high, with narrow lance-shaped or oval leaves, 2-5.5 cm long and 1.5-4.5 mm wide. The 13-30 mm long tubular flowers are pink or mauve with white lobes and a pink or purple throat. Flowers summer and autumn.

The Orobanchaceae, the *broomrape family*, consists of annual or perennial herbs and shrubs of which all, except *Lindbergia* and *Rehmannia*, are parasitic on the roots of other plants. Either fully or partly parasitic (holoparasitic or hemiparasitic) the holoparasitic species lack chlorophyll and therefore cannot perform photosynthesis, being variously yellowish, brownish, purplish or white in colour.

Centranthera is therefore hemiparasitic, and possesses an extensive root system as well as haustoria (specialised appendage attaching to host plant), which transfer nutrients from the host plant.



Rhamphicarpa australensis

LINDERNIACEAE (formerly in Schrophulareaceae)

Bog Figwort



This is a rare plant of our region, declared as such by the Nature Conservation Act of 1992.

A small annual herb to 30cm tall, which occurs on moist, poorly drained soils or on the margins of wetlands, with other small ephemeral wetland species, such as *Centranthera*, above.

Leaves are strap like, and the white tubular flowers with

fused petals are up to 30mm long. The 5 calyx lobes are distinctly pointed. The fruit is an egg shaped capsule with a distinct conical beak. The dead plants dry to a distinctive black colour in the dry season.

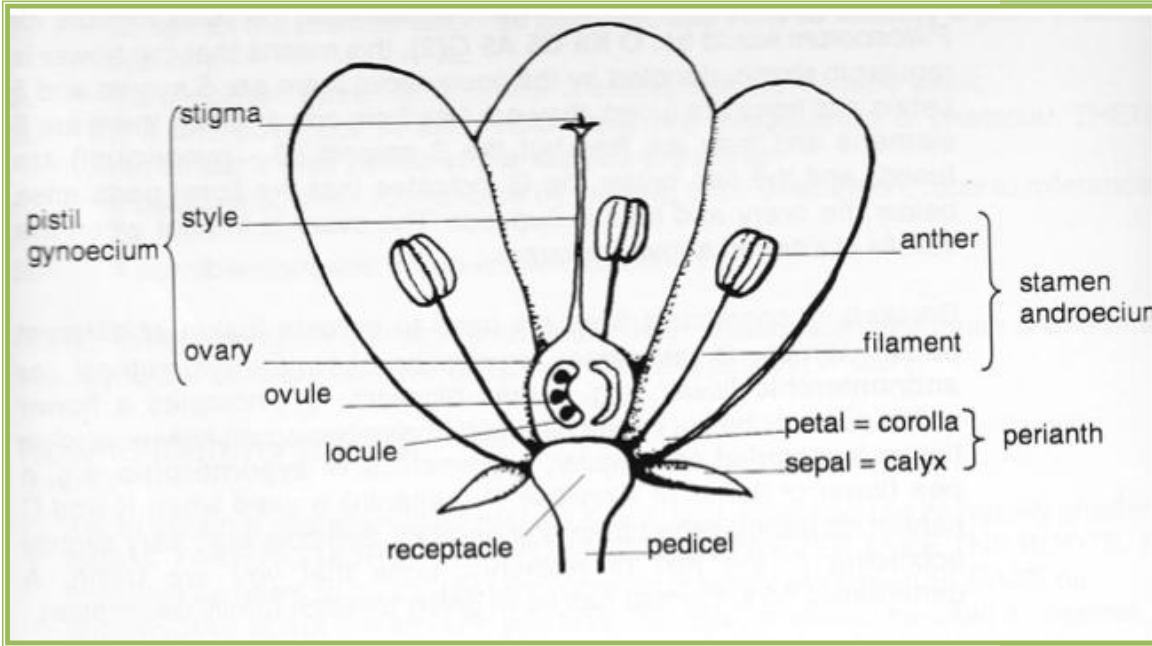
“Almost nothing is known of this small easily overlooked species. Further research is needed into the ecology, habitat and management requirements of this species, especially impacts of varying fire regimes.”¹

John Elliott. (With help from *Wikipedia*, and *Rare and Threatened Plants*.)

¹ *Rare and Threatened Plants of the Townsville Thuringowa Region* Calvert/Lokkers/Cumming 2005

Keith's Tech Spot – Floral Features

Flower Parts



Regular Flowers

Regular or Symmetrical Flower
= Actinomorphic

One which if divided in a number of directions would give equal halves.



Irregular Flowers

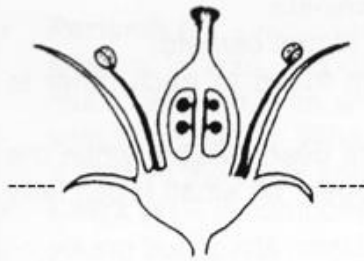
Irregular or Asymmetrical Flower
= Zygomorphic

One which can only be divided in one direction to give equal halves.



Placement of the Ovary

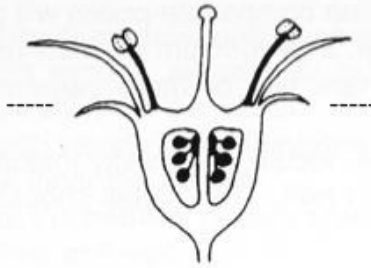
Superior Ovary



superior ovary
hypogynous



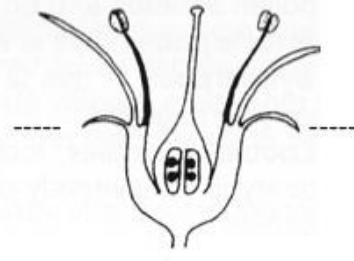
Inferior Ovary



inferior ovary
epigynous



Hypanthium



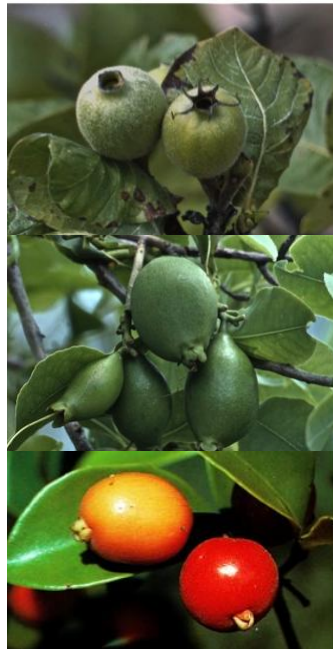
floral tube
or hypanthium



Remains of the sepals are visible beneath the fruit. (like tomatoes)



Remains of the Sepals are clearly visible on the distal end of the fruit (like apples)



Here the ovary is said to be 'inferior' as it is fused to the sides of the floral tube



Here the ovary is said to be 'superior' as it is attached to the floral tube at the base only



Society for Growing Australian Plants, Townsville Branch Inc.
P.O. Box 363 Aitkenvale, Qld. 4814

Membership Application or Renewal Form

Membership Year is from 1st April to 31st March
(Initial half yearly membership is available for those joining around October)

Name: _____

Address: _____

Email address: _____

Fee: \$ _____

If claiming full time student fee please quote Student No.....

Additional household members may be registered for a nominal fee of \$2.00 per person but they will not receive newsletters or magazines.

Society for Growing Australian Plants Townsville Branch Inc ABN 32 302 397 597
Membership Fees:

New Ordinary Member	\$45.00
New Student Member	\$35.00
Renewal Ordinary	\$40.00
Renewal Student	\$30.00
New Member (Half Year from Oct. 2010)	\$25.00
Additional Household Member	\$ 2.00
Queensland Bulletin subscription only	\$30.00

If paying electronically please quote 'Membership and your name'
Bendigo Bank BSB 633-000 A/C 113462386

The Society for Growing Australian Plants promotes
the conservation of Australian native flora
by encouraging its introduction into gardens.



SGAP Townsville Annual General Meeting
Wednesday 10th March 2010

Meeting opened at 8.03pm

Present: As per attendance book.

Apologies: Greg Calvert, Janice Lough.

Minutes: Minutes of the previous AGM were read by John E. moved by Keith T. and seconded by John E. "that the minutes of the meeting held as read be confirmed". Carried.

Matters Arising: Nil.

Treasurer's Report: The Financial Statement for the year ending 31.12.09 was formally presented (as attached) by Keith T. Keith stated that there were no large items to report, but we must be aware of the rising costs of our overheads. Thanks to those who have responded to the plea to take digital copies of the newsletter, which has reduced, printing costs. Moved Keith T. Seconded Betsy J. "That the report presented, be received, and approval given for accounts as listed on the report to be passed for payment" Carried.

Matters Arising: Nil.

Chairpersons Report: As attached in the newsletter.

Rex G. now declared all offices vacant and called for nominees for the following positions.

Election of Officers- Townsville Branch 2009-2010.

Position	Nominee	Nominated	Seconded
Chairperson	Janice Lough	Keith	Charles
V.Chairperson	Rex G.	Charles	Keith
Secretary	John E.	Charles	Jane M.
Treasurer	Keith T.	John E	Kathy
Cmte/Organiser	Greg C.	John E	Rex
Newsletter	Iris Dodd	Leonie	Betsy J
Librarian	Rex G.	Keith	Kathy
Tech Officer	Betsy/Greg	Charles	Don
Webmaster	John Elliott	Keith	Charles
Provedore	Janice L.	Jane	Beth

Keith T. proposed that **Paul Brown be appointed as Auditor.**

Seconded by Kathy. Carried.

General Business: Nil

Meeting Closed 8.14pm